

# S.F.V.B.S.

SAN FERNANDO VALLEY BROMELIAD SOCIETY

## JANUARY 2014 NEWSLETTER

### OFFICERS

Pres: **Mike Wisnev** V.P. & News: **Mary K. Carroll** Secretary: **Kathleen Misko** Treasurer: **Mary Chan**  
Membership: **Nancy P.-Hapke** Health & Wellness: **Georgia Roiz** Web Page: **Kim Thorpe**  
Directors: **Steve Ball, Bryan Chan, Richard Kaz -fp, Dave Bassani-fp**

## Saturday January 4, 2014 @ 10:00 am

Sepulveda Garden Center 16633 Magnolia Blvd. Encino, California 91316

### AGENDA

**9:30 – SET UP & SOCIALIZE**

**10:00 - Door Prize – for members who arrive before 10:00**

**10:05 -Welcome Visitors and New Members.**  
Make announcements and Introduce Speaker

**10:15 –Speaker: Larry Farley**  
**Program title: “Winter in Maui”**

Larry takes great photos and he will show us Maui through the eyes of a longtime Bromeliad grower. He said although December is winter, Maui remains tropical all year long. Pleasant warm weather greets you upon your winter visit to Maui. The lush colorful tropical foliage is a treat to see and the smells of the beautiful flowers is such joy. My favorite fragrances are the Plumerias, Gingers, Orchids but don't forget the delicious fruits that seem always in season.

I always focus on seeing as many Bromeliads that can be found growing along the highways (pineapples), in the many public and private gardens, nurseries as well as the assortment of ground cover at the hotels. I even visit the Lowes, Walgreens and Home Depots in my search for Bromeliads.

Yes, I was successful in my pursuit of Bromeliads and will share colorful pictures of Bromeliads and other tropical plants at our January meeting.

Our speaker was born, raised and retired right here in California. Since retiring he and his wife have more time to travel. He has been collecting plants since he was a youngster and obtained his first Bromeliad in 1957; it was *Billbergia nutans* purchased at the Culver City Bromeliad Show; cost him 25 cents. Larry is a long time member of the South Bay Bromeliad group and we are pleased that he joined our San Fernando Valley Bromeliad Society a few years ago.

The SFV Rose Society pruning will also take place on **Saturday January 4, 2014. We will share coffee and donuts with them between 9:30-10:00 and lunch food at the 11:15 - 11:45 break.** The last two years were enjoyable. Please reach out and welcome them, maybe we can interest a few in joining our group. They are welcome to come in to hear our speaker at 10:15 and also to participate in the mini-auction and raffle.

### **11:15 - Refreshment Break:**

Will the following members please provide refreshments this month. **Gloria Friedman, Steve Freize, Mardy Graves, Adrienne Jaffee, James Johnson, and anyone else who has a snack they would like to shar.** If you can't contribute this month don't stay away just bring a snack next time you come.

**Questions about refreshments?** Call Mary K. **818-705-4728**, leave a message, she will call back.

### ***Feed The Kitty***

If you don't contribute to the refreshment table, please make a small donation to the **(feed the kitty jar)** on the table; this helps fund the coffee breaks.

**11:30 - Show and Tell – Each member Please bring one plant.** You may not have a pristine plant but you certainly have one that needs a name or is sick and you have a question.

**11:45 – special Sale for members only**

**12:00 – Mini Auction:** members contribute

**12:15 - Raffle:** We need each member to donate

**12:30 – Pick Up around your area /**

**Meeting is over—Drive safely \*\***

**(Over for page 2)**

## TAKING A LOOK BACK *at our December Holiday Brunch .....*

This was the second year our Brunch was held at the Sepulveda Garden Center. Thanks to Mike, Joyce and Kim who helped to setup and decorate the day before along with several members from the Cactus Club. Party Day, while the food was being set up, Barry Landau entertained the group by showing Bromeliad photos from around the world. There were some great photos but that didn't stop the hungry folks from circling the table so we had to put out appetizers. I think Kaz Benadom's deviled eggs and Kathleen's scones were gone in about 2 minutes. All who attended this Holiday Brunch appeared to have a good time and **we owe a special thanks to all the women who pitched in to help with the food**; many did double duty that same night with the LACSS dinner. A special thanks to Ana, she worked so hard; she was there by my side the entire time. The pot luck food was all great. We can't thank Kim enough. We had a little fun recognition when we went around the room to connect names to the different dishes. When I got to Kim I think I said she cooked the Turkey; well that was an understatement. Kim was the overseer of the kitchen, she donated the turkey, crack bacon, all beverages and more contributions that I don't even remember. Thank you Kim and Artie for your continued support. Thanks to Bryan who purchased a nice selection of gift plants and distributed them to each club member. Many members also participated in the gift exchange by bringing in a nice wrapped plant. Several regular faces were missing at the party. Gloria, Richard and James were under the weather and couldn't attend. Others were tied up with different club festivities around the city.

**Hope to see you all at the next meeting by 10:00 am...**

### *Now Is The Time .....*

*TO* protect your plants from possible hail damage or from freezing temperatures. *Hail is associated with thunder storms, and if your plants are exposed to hail they will look like someone fired a shotgun at them.* When the news casters start talking *about skiing in the local mountains*, keep your ears open for the phrase 'freeze tonight' If you suspect freezing or hail (associated with thunderstorms), spreading newspaper or bed sheets will help. If you have very tender plants, bring them into the house or the garage for protection. If you bring your plants into the house, don't place them in front of a heating vent. *Station KNX 1070AM gives a short weather report every 10 minutes .*

*TO* water as needed, but at reduced rate – *temps are lower in winter-less evaporation.*

*TO* collect rainwater – *I have had 14.7 inches of rain this month (December 1988)*

*Now Is The Time* was written and first published by *Stan Oleson Jan 1989; and published again in the South Bay Bromeliad Associates Newsletter prepared by Bob Wright in January 2011*  
*Info in italics added by previous editor*

### **Announcements**

- ***Special Plant Sale*** – Mike and Bryan have purchased some plants for a special sale. Each paid member can participate through a drawing. This is the most fair way. There enough plants so that all members will be called on once. But there are not enough special plants to share with the visitors. However the visitors will be invited to listen to the speaker, to participate in the mini-auction and raffle. The special sale procedure will be explained prior to the sale. We will still have raffle plants so if you have a few to bring that would be appreciated.
- ***New Officers*** – Election in February

**(Continue on page 3)**

- **Happy Birthday to:** *James Johnson - Jan. 8, Phyllis Frieze Jan 11 and Leni Koska - Jan. 26*
- **Sylmar High School** agricultural program - lets plan on a meeting at the High School, maybe March?
- **Congratulations...** to *Joyce Schuman* for being elected President of the Los Angeles Cactus & Succulent Society. *To Dave Bassini* who now has a position with the Rose Society of Beverly Hills. *to Duke Benadom* for success with his “Superb Succulents” Book which includes some cactus and some bromeliads. *To Bryan Chan* who is the organizer of music gigs featuring Blues. **Two dates coming up Jan. 3rd, 7pm to 10.** Friday night music showcases at the **Pho-King Delicious 9350 Corbin Ave Northridge, 91324.** This Vietnamese restaurant serves a variety of noodle dishes, salads, spring rolls, soups and sandwiches; known for its delicious pho. **no cover charge. / Jan 4th 6pm - 10.** Another night of music at **Jumpcut Café (formally Lulu’s Beehive)** at **13203 Ventura Blvd Studio City 91604** This will be a up close and intimate performance. The cafe serves awesome coffee drinks, sandwiches, soups and salads. **no cover charge**

**If you haven’t noticed, our climate is changing ! – remember** extreme wind can quickly dry out your plants; keep an eye on them, especially the Tillandsias. Spray the Tillandsias before noon so they have 4 hours to dry before night time.

**Rewards System** – This is a reminder that you will be rewarded for participation. Bring a Show-N- Tell plant, raffle plants, and Refreshments and you will be rewarded with Raffle tickets. We realize not everyone has pristine show plants but each of us certainly have sick or unidentified plants that can be brought in. **Each member, please bring one plant.**

- **What can you do to help our club?**

1. **Refreshments** - We need a couple of people to volunteer to handle the refreshments. This job can be as simple as making coffee and setting up the table or as extravagant as you please. I will continue to help but someone else needs to be responsible. I think two people should take over the job in case one is missing.
2. **Newsletter** - We need a person to take over as editor. Our newsletter can just be a one page announcement of the next meeting and speaker if you like. Or you can make it interesting by adding other info. We mail to only 11 snail-mail folks and the others all receive news by e-mail. The treasurer pays for expenses. I will continue to help.
3. There are many other ways to participate. First foremost we need **members to plan to attend all meetings.** Our group is small and we need your participation. From time to time emergencies come up and some family events that can't be rescheduled, that's life. What we ask is for people **to try not to plan anything else on our meeting day.** Look at our calendar below before you schedule. You can **donate an occasional plant for the mini-auction or the raffle.** A percentage from the auction plants will go the club and a part to the doner. Most of the time there will be plants priced for every pocketbook. **You can also participate by buying raffle tickets or by bidding** on a plant in the auction

**This is your newsletter!** Do you have something to announce or something humorous or educational to add?? \*\*

<<><> **Wishing you a Happy, Healthy New Year 2014** <><>>

### *Speakers*

Do you have any ideas for Speakers about Bromeliads or any similar topics? We are always looking for an interesting speaker. If you hear of someone, please notify Mary K. at 818-705-4728 or e-mail [rango676@aol.com](mailto:rango676@aol.com)

### *UPCOMING EVENTS*

## **Please Put These Dates on Your Calendar**

**Suggestions:** visit the Sylmar School project for one of the 2014 meetings  
Visit Live Art Nursery in Northridge for one meeting

## **2014 Membership Dues**

Pay at the meeting to:  
SFVBS – Treasurer - Mary Chan

**TIME TO RENEW.....**    *Yearly Membership Dues*    **\$10.00** for a single or couple

Saturday, January 4, 2014	SFVBS Regular meeting – Program by Larry Farley
Saturday, February 1, 2014	SFVBS Regular meeting – STBA
Saturday, March 1, 2014	SFVBS Regular meeting - STBA
Saturday, April 5, 2014	SFVBS Regular meeting - STBA
Saturday, May 3, 2014 ??	SFVBS meeting / possible Field Trip LaBallona Bromeliad Show & Sale
Saturday, June 7, 2014	SFVBS Regular meeting - STBA
Sat & Sun - June 14 & 15	<b>SFVBS Bromeliad Show &amp; Sale</b>
Saturday, July 5, 2014	SFVBS Regular meeting - STBA
Saturday, August 2, 2014 ??	SFVBS meeting and Field Trip
Sat & Sun August 2 & 3	South Bay Bromeliad Show & Sale
Saturday, Sept 6, 2014	SFVBS Regular meeting - STBA
Saturday, Oct 4, 2014	SFVBS Regular meeting - STBA
Saturday, Nov 1, 2014	SFVBS Regular meeting - STBA
Saturday, Dec 6, 2014	Holiday Meeting & Brunch 10:00 – 2:00

**Dates with ?? to be discussed at a later date**

**STBA = Speaker To Be Announced**

**(Continue on page 5)**



## Taxonomic Tidbits – *Tillandsia* Subgenera III

By Mike Wisnev, SFVBS President ([mwisnev@sbcglobal.net](mailto:mwisnev@sbcglobal.net))

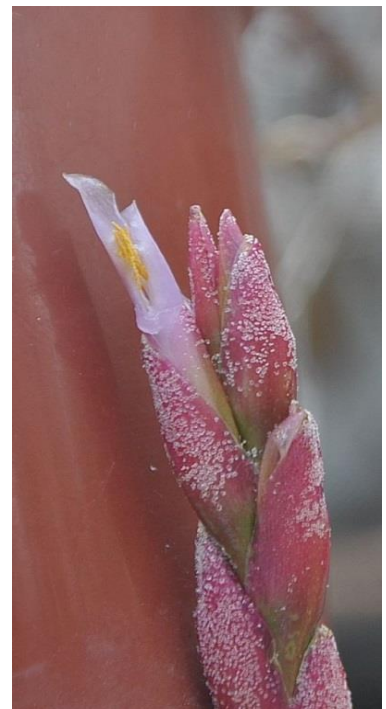
San Fernando Valley Bromeliad Society Newsletter –January 2014

This article finishes up discussing the *Tillandsia* subgenera. To briefly recap, there are currently six subgenera of the *Tillandsia* genus. Two subgenera are distinguished by their exerted stamens; the larger of these groups typically has tube-like flowers, while the other has droopy petals. Two others have very short stamens (and short and stout styles). So we have seen two subgenera with long exerted stamens, and two with very short ones. That only leaves a few possibilities for the last two subgenera. Possibly no stamens? Nope, like almost all Bromeliad genera, all *Tillandsia* flowers have both stamens and pistils.

That only leaves flowers with mid-size stamens. In fact, the subgenus *Allardtia* has stamens that are almost as long as the petal, or slightly shorter. Styles are slender. While this group has the largest number of species, I haven't even heard of most of them, let alone seen them. I will say some have great names – how can you beat *T pomacochae* or *T bongarana*? Some that are cultivated include the well-known *T tectorum*, *latifolia*, *sonnians* and *dura*. *T mauryana* and *T edithiae* are also in this group.



Here is the flower of one, *Tillandsia queroensis*



It took months for the inflorescence to develop, and the flower only lasted a few days. I waited a bit too long to dissect the first one – for the next flower, I pulled off one of the petals. You can see the petals are a bit longer than the stamens.



## Page 6

*Tillandsia tectorum* is also in this group. I haven't seen one flower. This is one you should have if you like Tillandsias – they have hairy leaves. Here is a large clump I saw once - sadly it isn't mine!



***Tillandsia tectorum***

The *Tillandsia tectorum* below is mine – look at the leaves!





The last group is subgenus *Anoplophytum*. I am not curious enough to see why someone came up with this name (or *Allardtia* or *Diaphoranthema*). *Tillandsias* in the *Anoplophytum* subgenus have stamens that generally don't extend beyond the petal claw (remember that is the bottom narrow part of the petal), so they are relatively shorter than those in the *Allardtia* subgenus. However, unlike the subgenera discussed last month, they have slender styles. Some of the most commonly seen *Tillandsias* are in this group - *T aeranthos*, *bergeri*, *stricta* and *tenuifolia*. Many others are also in cultivation, like *T ixiodes*, *xiphiodes*, *jucunda*, *gardneri* and *diaguitensis*.

Below is a large clump of *T bergeri* and a close up of one inflorescence. The yellow in the middle is the pollen of the deeply included stamens.



***Tillandsia bergeri***



## Tillandsia ixiodes

Here is another member of the subgenus, *Tillandsia ixiodes*.

Mary K brought in this one to an earlier meeting.

Many but not all members of this subgenus have another unusual feature. The stamens of the other subgenera have straight filaments. But many of this subgenus have “plicate” filaments. This means they are folded, sort of like a fan or accordion.

Evans, T. M. and G. K. Brown. 1989. Plicate staminal filaments in

*Tillandsia* subgenus *Anoplophytum* (Bromeliaceae). American Journal of Botany 76: 1478-1485. Most of the article addressed the cellular processes that occur as the stamens become plicate. But they also found 4 species in other subgenera with plicate filaments and thus suggested that this feature was not as important as once thought to characterize the subgenera.

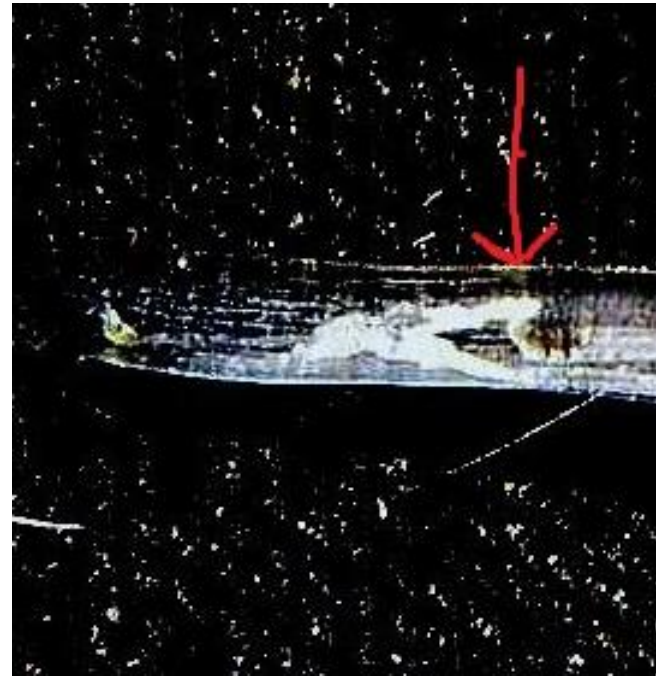
I didn't know about this feature until I did this article, so I have never checked for this before and didn't have any of this subgenus in bloom for a long time. But after I send Mary this article for the Newsletter, my *T. jucunda* in bloom so I revised the article. I took off some petals – you can see how the anthers only extend to about the end of the petal claw. Note also that the filaments are not very straight at the bottom – they are sort of curved. I wasn't sure this was the plicate filament or this happened when I peeled back the sepals and petals.







Then I peeled off another petal, and played around with photo to help show the filament. Look at the red arrow – the upper filament starts out straight, then bends back itself, sort of curves into a u shape, and continues straight. This is plicate!



At the outset of these articles, I mentioned that the *Tillandsia* subgenera will likely be revised in the near future. Walter Till, who has also studied cacti (and in particular *Gymnocalycium*), is working on these changes. He and three other botanists at the University of Vienna did an earlier study in 2005 that suggested the current subgenera might not be valid, but the authors felt more intensive study was needed. Barfuss, M.H.J., Samuel, R., Till, W., Stuessy, T.F., 2005. Phylogenetic relationships in subfamily Tillandsioideae (Bromeliaceae) based on DNA sequence data from seven plastid regions. *Am. J. Bot.* 92, 337–351.

The 2005 study more or less found these six subgenera were a mess from a DNA standpoint. These studies essentially analyze some of the DNA of the species and then prepare a tree-like diagram based on the way the species group together based on the DNA analysis. For the subgenera to be valid from a DNA standpoint, the tree would have six major branches, and each branch would include one subgenera.

Instead, the results found major three branches for *Tillandsias*, each of which branched a lot more. None of the subgenera fell on a single branch. The closest was subgenus *Tillandsia*. Here is how they played out

Subgenus and characteristics	Study found
<i>Tillandsia</i> -exserted stamens	Most likely to be a good subgenus – most grouped together on one branch, but a few exceptions and type plant of <i>Allardtia</i> also on that branch
<i>Pseudalcantarea</i> - exserted stamens and flaccid petals	A real mess. Only 4 species and one on each major branch. One by itself on 4 <sup>th</sup> branch.
<i>Phytarrhiza</i> - Short stamens and large flowers	On two major branches, and not grouped together on either branch.
<i>Diaphoranthema</i> – short stamens and small flowers	Only a few studied, all on one major branch, but not grouped together
<i>Allardtia</i> – medium long stamens	Also a mess – some on each major branch, and not even grouped together on the largest such branch. Some with <i>Vriesea</i>
<i>Anoplophytum</i> – medium short stamens	All on one major branch, but grouped together on 4 different branches of it; 3 of these correspond to specific geographic regions.
xeric <i>Vriesea</i> – Grant had proposed these be moved to <i>Tillandsia</i>	Grouped together on one major branch of <i>Tillandsias</i> .

If additional studies show similar results, it would seem very difficult to maintain any of these subgenera as presently constituted, other than perhaps subgenus *Tillandsia*. They instead indicate that the characteristics used to distinguish the subgenera are not critical, and evolved more than once for the different groups. This may be a case of convergent evolution. Hopefully, we will find out soon.