



S.F.V.B.S.

SAN FERNANDO VALLEY BROMELIAD SOCIETY

P.O. BOX 16561, ENCINO, CA 91416-6561

sanfernandovalleybs@groups.facebook.com

APRIL 4 2015 NEWSLETTER

OFFICERS

Pres & News: **Mike Wisnev** V.P.: **Mary K. Carroll** Secretary: _____ Treasurer: **Mary Chan**

Membership: **Joyce Schumann** Health & Wellness: **Georgia Roiz** Web Page: **Kim Thorpe**

Directors: **Steve Ball, Bryan Chan, Richard Kaz -fp, Dave Bassani-fp**

next meeting: **Saturday Apr. 4, 2015 @ 10:00 am**
Sepulveda Garden Center 16633 Magnolia Blvd. Encino, California 91316

AGENDA

9:30 – SET UP & SOCIALIZE

10:00 - Door Prize – for members who arrive before 10:00

10:05 -Welcome Visitors and New Members.
Make announcements and Introduce Speaker

10:15 –Speaker presentation:

10:15 –Speaker: *George Rivera*

Program: “Landscaping with Bromeliads”

George began with a background in installing fountains and now is the owner of *Plant Hunters Paradise in the Orange County area*. His love of Bromeliads began with Tillandsias however, he landscapes with a wide variety of Bromeliads, Succulents and other exotic plants. His photography is great and you will find that he is knowledgeable about many plants. Some of the bromeliads, tropical plants and succulents shown in the digital photos will be displayed for sale at our meeting. **Don't miss this meeting!** <>

TIME TO RENEW ?

Are you one of the 3 people who still need to Renew for 2015?

11:15 - Refreshment Break and Show and Tell:

Will the following members please provide refreshments this month: *Joyce Schumann, Carole Scott, Ray Van Veen, Andrea Wareham, Mike & Ana Wisnev, Bob Wright, Max Wurzel, and anyone else who has a snack they would like to share.* If you can't contribute this month don't stay away.... just bring a snack next time you come.

Questions about refreshments? Call Mary K. (818-705-4728) Leave message - she will call back.

Feed The Kitty

If you don't contribute to the refreshment table, please make a small donation to ([feed the kitty jar](#)) on the table; this helps fund the coffee breaks.

11:30 - Show and Tell is our educational part of the meeting – Each member **please bring one plant.** You may not have a pristine plant but you certainly have one that needs a name or is sick and you have a question.

11:45 – Mini Auction: members contribute

12:00 – Raffle: We need each member to donate

12:15 - Pick Up around your area

12:30 –/ Meeting is over—Drive safely <>

Mary K is taking a look back at the March meeting..... Everyone looked great sporting the new name badges delivered by *Kathleen Misko*. Most members chose to leave the badges and not take them home but that is their choice. We had a very good attendance, outstanding Show-N-Tell, Mini-auction and raffle. Our speaker *Gregg DeChirico* is always appreciated. He donated plants for our raffle and auction. *Gregg* had a lot of bromeliads for sale and so did *Bryan* and *Richard*. We always have a nice lunch; our members like to experiment on us, especially Big *Steve Rudolph* and his wife *Kim*. Speaking of Show-N-Tell, *Ray VanVeen* brought in a hanging clump of *Billbergia Diane* that had over 12 blooms; it was just spectacular. *Barry Landau* posted many of the Show-N-Tell plants on the SFVBS face book page right after the meeting. Many plants were brought in by *S. Ball, B. Chan, B. Wright, C. Rogers, Nancy and Leni*. A survey was taken in order to measure interest and participation for the upcoming show and sale at the end of May. Several of our members hold dual membership with SFVBS as well as in the LACSS, so their participation with the bromeliad side will mostly be limited to exhibiting plants; however the survey results were positive with several members volunteering to help a little. Thank you for all the raffle donations. Although several members were missing, who normally attend, we had a nice turn out. I thought we had a nice meeting; thank you to all who participated even in the smallest way; attendance is important for our success. <>

• **Announcements**

- **Questionnaire Results** - 28 in attendance / 20 surveys collected / 19 want to have a show 9 don't care / 13 will help set up / 13 will exhibit approx. 60 plants / 4 plan to sell plants / 6 members plan to donate approx. 2 dz. sale plants / 5 women volunteered to help with food on Saturday and 3 will help on Sunday 7 members said they will help break down Show on Sunday --- Thank you all, we will be in touch
- **Officers & Volunteers** – We still need a volunteer for Secretary and MaryK needs help with refreshments. Kathleen Misko has resigned as membership chair; thank you for a job well done. We all appreciate her, collecting the dues, handing out membership rosters and especially the fine job she did getting the new name tags for us. Thank you to Joyce Schumann, she has agreed to take over the membership job.
- **Show Volunteers** needed to work at a reception table and to collect items for a raffle
- **Happy Birthday to Bryan Chan** – April 1, **Chris Rogers** – April 4, **Ray Van Veen** – April 12
- **LACSS Festival May 30 - 31** – we need volunteers to participate with the inside display and the food.
- **Desert Creations**, The backyard home nursery is no longer the place. Congratulations, Artie Chavez and Steve Frieze are moving on up... 😊 they are now partners in a nursery at 18161 Parthenia, Northridge CA 91325. The new nursery is located across from U-Haul and in the rear of “Destination Workouts” (a large Red and Black building.) The nursery is open 7 days a week. Steve, Phyllis, Kim or Artie are in the shop Friday, Saturday and Sunday.
- **Summer Picnic** - We have been invited to have our summer picnic at “Desert Creations” new location; the date is still to be determined; how does the 2nd weekend of sound.
- Another question still unanswered ... Should we **test** a joint Xmas celebration with the cactus club?
- **Participation Rewards System** – This is a reminder that you will be rewarded for participation. Bring a Show-N- Tell plant, raffle plants, and Refreshments and you will be rewarded with a Raffle ticket for each category. We realize not everyone has pristine show plants but each of us certainly have unidentified plants that can be brought in. Each member, please bring one plant. <>
- **This month we have several member contributions for our *Broms in Bloom*; all are very appreciated !**
- **Ramblings about Better Growing** The editor is looking for information from other members for this column. I'm sure some of you have some growing tips to share about what to do or what not to do; it can be 1 or 2 sentences or 3 or 4 paragraphs. Member contributions are vital to keep the newsletter interesting and our SFVBS thriving. <>

Please Put These Dates on Your Calendar

Saturday, May 2, 2015	Speaker: <i>Ray VanVeen</i>
Sat & Sun, May 2-3, 2015	LaBallona Bromeliad Show
Sat & Sun – May 30 & 31	SFVBS Bromeliad Show & Sale
Saturday, June 6, 2015	Speaker : <i>Guillermo Rivera</i>
Saturday, July 4 , 2015	No Meeting due to holiday
Saturday, August 1, 2015	Speaker: <i>Andy Siekkenen</i>
Sat & Sun, August 1 & 2, 2015	South Bay Bromeliad Show
Saturday, Sept 5, 2015	Speaker: <i>Woody Minnick</i>
Saturday, Oct 3, 2015	SFVBS Regular meeting - STBA
Saturday, Nov 7, 2015	SFVBS Regular meeting - STBA
Saturday, Dec 5, 2015	Holiday Meeting – Time ???

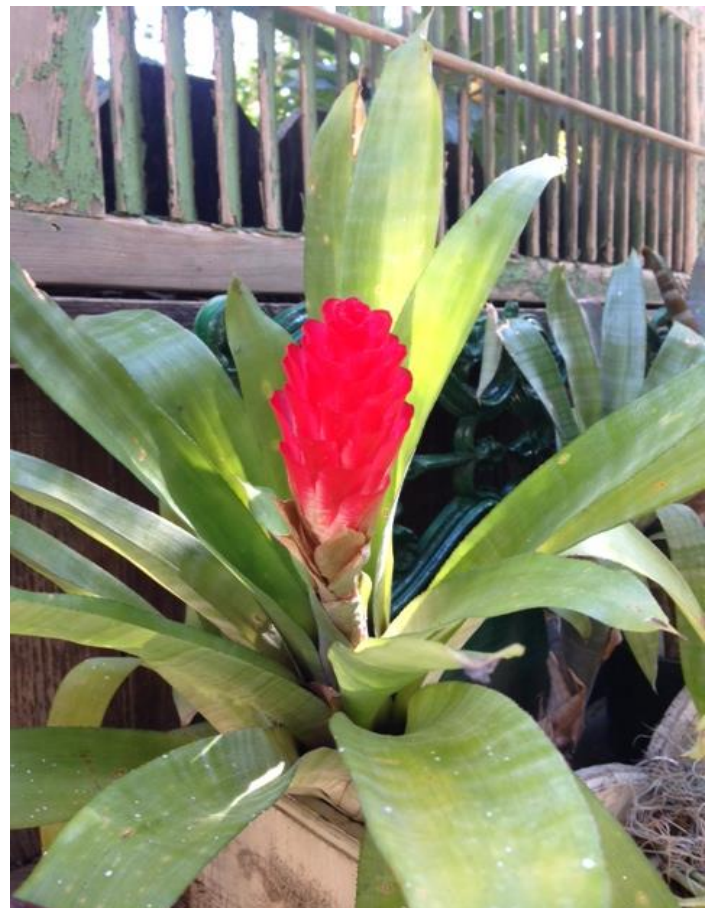
STBA = Speaker To Be Announced

Speakers - We have some interesting speakers lined up for the next few months of this year but it is never to early to start planning for 2016. Let us know if you have any ideas for Speakers about Bromeliads or any similar topics? We are always looking for an interesting speaker. If you hear of someone, please notify Mary K. at 818-705-4728 or e-mail rango676@aol.com <>

-- Broms in Bloom - Member Photos --

At a recent SFVBS meeting MaryK donated this Quesnalia to the mini-auction. Kathleen Misko won the plant, it bloomed and she sent the photo along to share. It is a very very red Quesnalia with white banded leaves. It may be Quesnalia quesneliana or Q. Testudo.

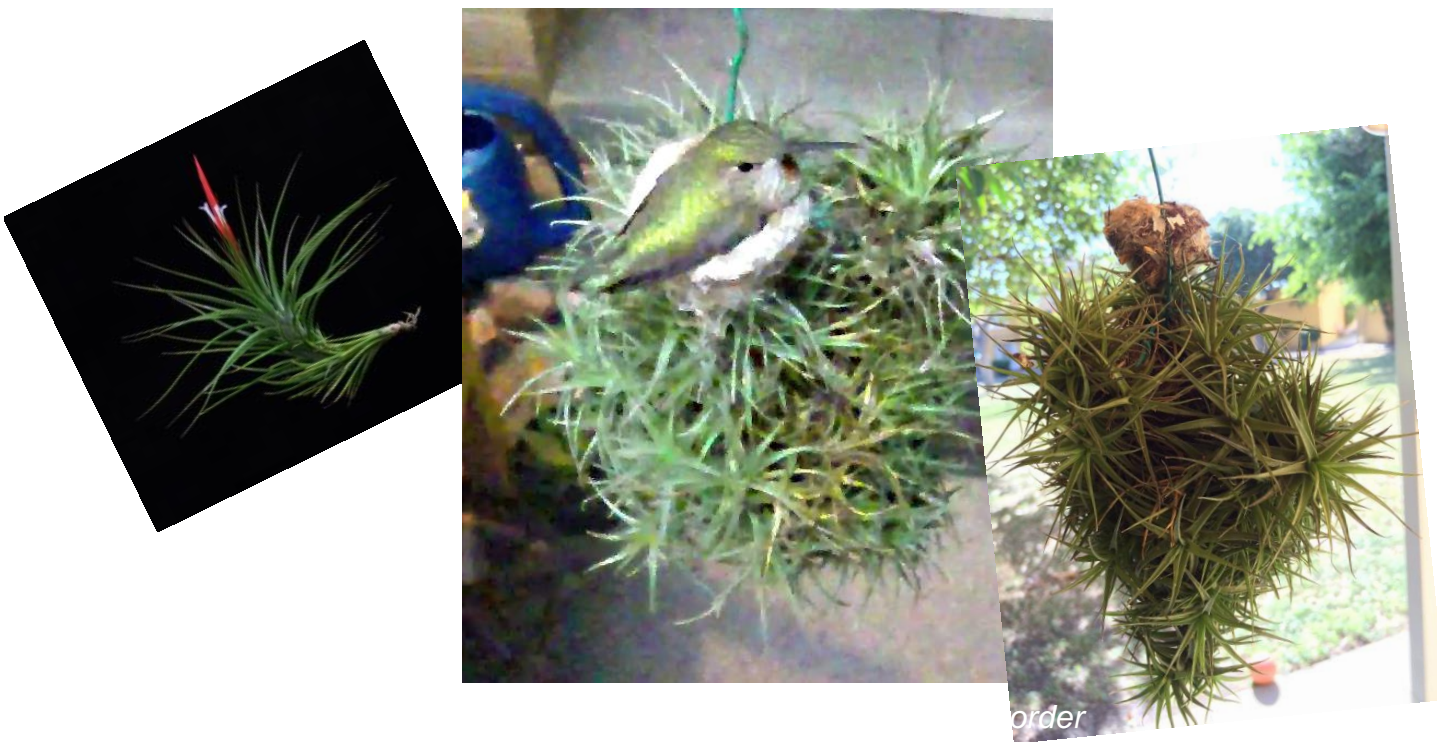
Let us know which you think it is.



A Rookie's Contribution *By Roger Cohen, Carryday@mac.com*

San Fernando Valley Bromeliad Society Newsletter – April 2015

Tillandsia aeranthos home of Natasha the Hummingbird



Rainforest Flora. How cool is that place? The last time our group headed down south for the South Bay Bromeliad show, I was so inspired by the displays and entrants in the competition. The colors of some of the winners were absolutely beyond what I'd seen before. We browsed and made mental notes of plants and displays we'd like to emulate.

I had a mission to get a quantity of Tillandsia I'd be comfortable with to start adding to every piece of decorative wood I owned. At one point, Kathleen spotted a perfect sphere of Tillies hanging from a single wire. In my mind, I could slowly peel off one at a time and it would be an effective quiver of Tillies to make every piece of wood come to life. The sphere would even stay a perfect circle, if I did it right. Nice plan. I bought it immediately.

A few weeks later at a meeting, I mentioned the scheme to John Martinez, a trusted mentor, and he had a razor sharp, deep analysis captured with one word, "Why?"

Tillies are inexpensive and it probably took years to get that sphere as perfect as it was. Let it alone and it will prove far more rewarding than whatever it is you pull it apart to make. I knew he was right, the minute I heard him say it, it's just one of those things you need a mentor to help you see sometimes- 'see the Rainforest flora for the Tillies.'

The way she knits the spiderwebs!!!!



I don't know, but about four months or so later my next mentor, Natasha the Hummingbird gently began construction of a 2 bedroom condo atop my Tillisphere.

First, one tiny egg, then another as she ignored my misting and picture taking. I'm looking forward to this flora/fauna collision with the giddy attitude of a 7 year old I know....

Natasha, taking care of business!



Natasha, I call Mom, has nested and laid 2 eggs to date. Thought it might be cool to track her progress. The nest and the spider webbing are amazing.

I hope to have more pictures of Natasha and her babies next newsletter. As always thanks to Kathleen, John, Natasha and Mary K for encouraging and being such inspirations. Thanks bromeliad peoples.

Roger

Newbie



-- *Broms in Bloom - Member Photos* --



It's awfully hard to beat a beautiful Billbergia in bloom. This didn't have a label, but seems to match B vittata quite well.

submitted by Mike Wisnev

Taxonomic Tidbits – *Vriesea* s.l. III – two new Genera

By Mike Wisnev, SFVBS President (mwisnev@sbcglobal.net)

San Fernando Valley Bromeliad Society Newsletter – April 2015

A few months back, I discussed two genera, *Alcantara* and *Werauhia*, that had been split off from *Vriesea* in 1995. There is some controversy here, as some think the two should remain part of *Vriesea*.

When I discussed *Tillandsia* subgenera, I noted a DNA study had found the subgenera were a mess – the results suggested that the subgenera were not valid groups from a genetic standpoint. This same article addressed *Vriesea* s.l. Barfuss, M.H.J., Samuel, R., Till, W., Stuessy, T.F., 2005. Phylogenetic relationships in subfamily Tillandsioideae (Bromeliaceae) based on DNA sequence data from seven plastid regions. *Am. J. Bot.* 92, 337–351.

As to *Vriesea* s.l., the study basically concluded

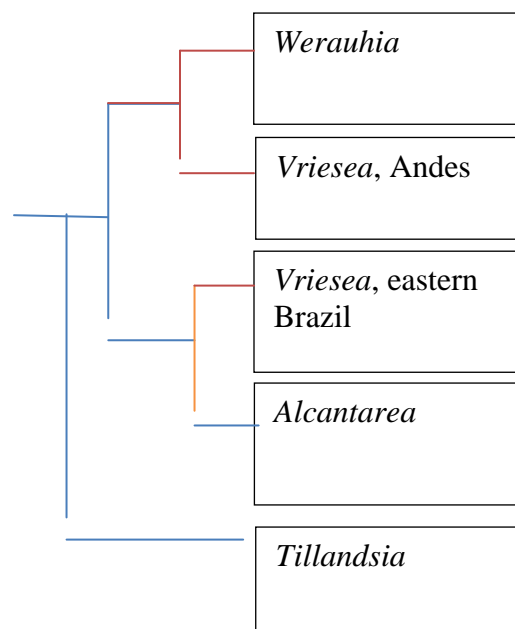
“Our data show that *Vriesea* s.l. in the sense of Smith and Downs (1977; i.e., including *Alcantarea* and *Werauhia*) is a well-supported group, but only when some species previously treated here are excluded and others treated as *Tillandsia* are herein transferred In contrast, the results show convincingly that the separation of *Alcantarea* and *Werauhia* makes the remainder of *Vriesea* paraphyletic.” p 348.

I'll spend the rest of this article explaining this conclusion.

Phylogenetics is a branch of science that tries to group species based on common ancestry. Species with different ancestors shouldn't be part of the same genus. They use DNA to infer ancestry. The results of the DNA study are shown in a cladogram, which is a tree-like diagram showing how the species grouped over time. Sometimes the species group much the way the pre-existing genera define them. Other times, the species fall into very different patterns – members of the same genus may fall on many different branches of the tree. In this case, the results suggest the genus is not valid, at least if common ancestry is important.

These studies don't try to look at every species, and they don't try to figure out the entire DNA of the species. That may happen someday, but today it would be enormously expensive and time consuming. The technology is there, however, and will no doubt get better. Instead, the authors of a study select a few species to sample, and then sample some DNA of these species. In this particular study, the authors sampled 110 species, mostly of the Tillandsioideae subfamily. About 20 were members of *Vriesea* s. l.

In marked contrast to the results for *Tillandsia* subgenera, the study found that the various groups for *Vriesea* s.l. were pretty accurate. Their cladogram, greatly simplified, looked something like this.



In the real cladogram, each of the species in the sample would be listed at the end of a line on the right. The actual diagram was not so clean – a few *Tillandsias* showed up in the *Vriesea* boxes, and some *Vriesea* showed up in the *Tillandsia* box. But not a lot.

Let's look at the above cladogram in more detail.

1. Starting from the left, the tree breaks into two branches. *Tillandsia* are by themselves on the lower branch. The upper left branch leads to *Vriesea* s.l., which consists of *Vriesea*, *Alcantarea* and *Werauhia*. This shows that *Vriesea* s.l. is a "well-supported group." In the actual study, a few *Tillandsias* showed up on the *Vriesea* branches, and vica versa, which suggests they may have to be transferred.

2. *Werauhia* and *Alcantarea* also are on separate branches. This shows they are each good groupings, but doesn't tell you if they are genera or subgenera.
3. *Vriesea* show up on 2 branches, one with *Alcantarea* and one with *Werauhia*. This is a problem, since it is "paraphyletic," if *Werauhia* and *Alcantarea* are separated.

If these results are supported by more studies, there would be two choices.

1. One approach is to treat *Vriesea* s.l. as one genus, with four subgenera – one for each of the branches. *Alcantarea* and *Werauhia* would no longer be genera.
2. The other approach would keep *Alcantarea* and *Werauhia* as genera. To do this, however, it is necessary to further split up *Vriesea* into 2 genera – one for those in Brazil and one in the Andes.

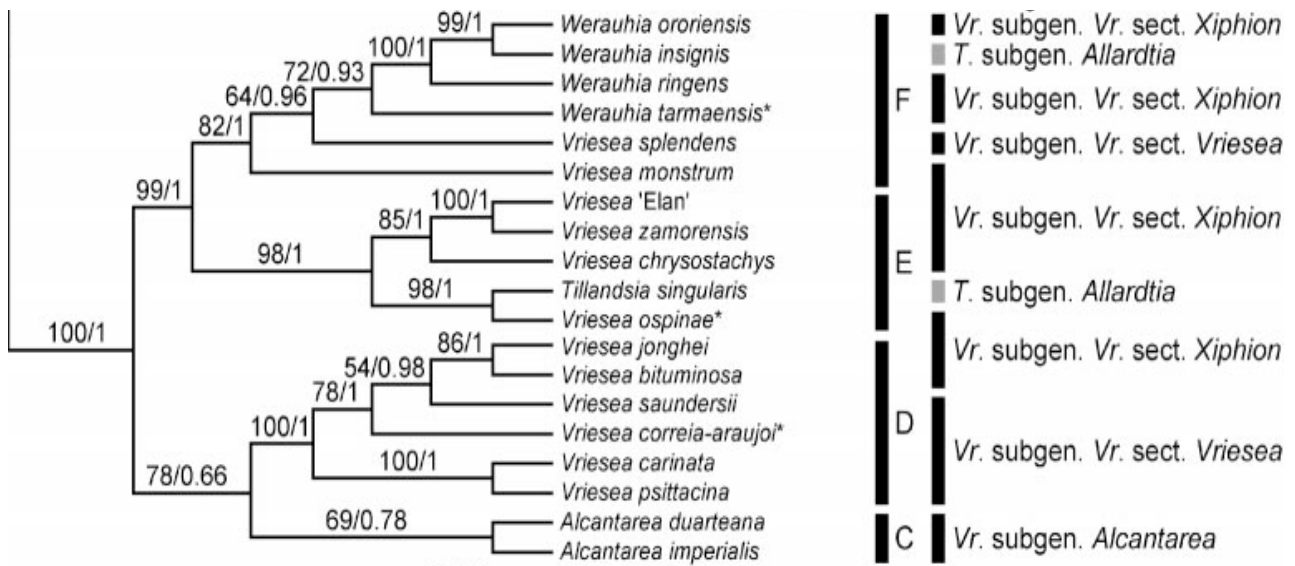
Under either approach, there are four groups – the only question is whether to make them separate genera, or subgenera. The cladogram doesn't give an answer for this – this is something for the botanists to fight about. The study did not attempt to answer it, but concluded there was a valid Vrieseae tribe (corresponding to *Vriesea* s.l.) within the Tillandsiodeae subfamily.

As mentioned before, there are some beautiful *Vriesea* species. Here are *V fenestralis* and *V gigantea*, which will get very large. *V fenestralis* has red spots on the underside as you can see from the second picture. A new form, *V gigantea nova* is even lighter in the interior.



A photograph of a young Iris 'V. fenestralis' plant. The plant has several long, narrow, green leaves with prominent dark brown or purple spots, characteristic of rust disease. A yellow label with the text 'V. fenestralis' and 'pop' is attached to the plant. The plant is resting on a surface covered with newspaper clippings and a coin. The clippings contain text such as 'U.S. GOVT Gold Inventory', 'our Gov't Gold Inventory will be priced at \$177.16 per coin while supplies last', and 'U.S. GOVT Gold Inventory'. A coin is visible in the bottom left corner.

As long as I have gone this far, I might as well show the actual cladogram, or at least that part relating to the Vrieseae tribe. Here it is – from p 344 of the study.



11

You can also see how the two current sections of subgen *Vrieseae* may not be good groups since they show up on various branches, rather than being grouped together. Finally, two species, *Vsplendens* and *Vmonstrum*, are problematic – they don't fall in either *Vriesea* group, and instead appear to be with *Werauhias*.

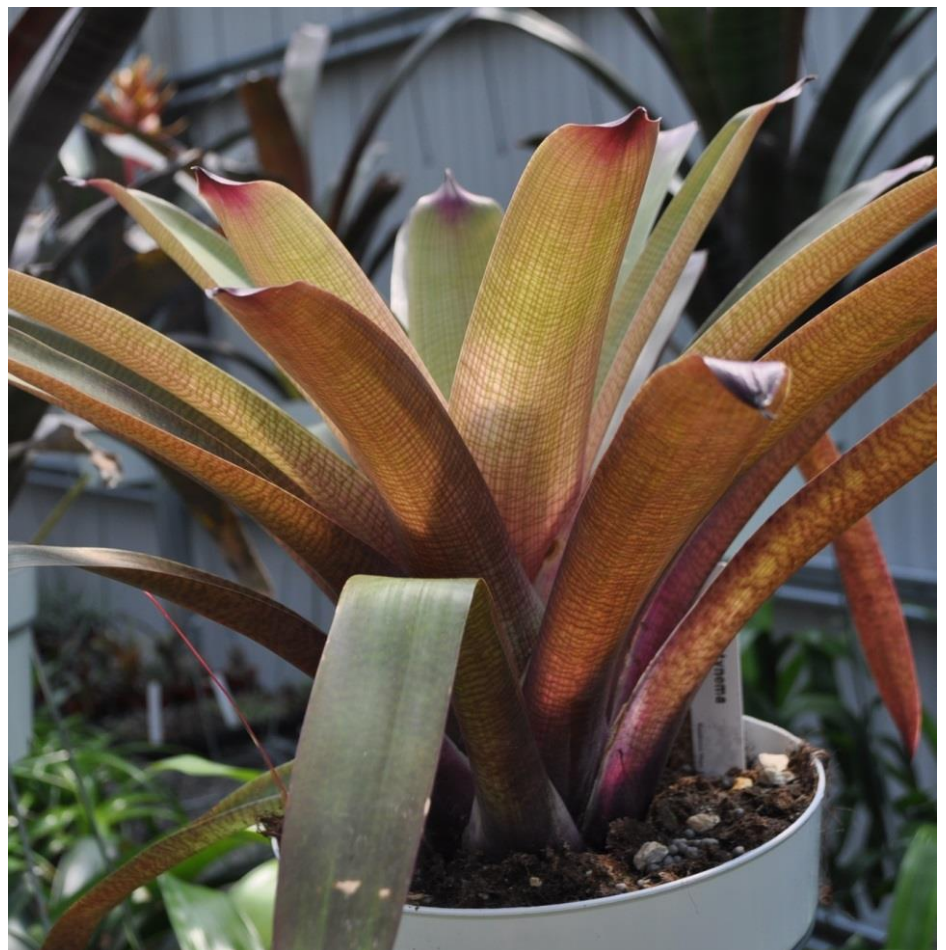
Lastly, the study also covered a few xeric *Vrieseas* – in the group Grant had previously transferred to *Tillandsia*. You don't see those species in the above cladogram. Instead they show up on the portion of the tree relating to *Tillandsia*. This suggests Grant is correct to have transferred them.

This study is hardly conclusive. It only covered 20 species. In particular, a lot more species would need to be addressed to feel confident whether the current subgenera of *Vriesea* are valid, or how to otherwise break it up. But it does strongly suggest that *Vriesea*, *Alcantarea* and *Werauhia* are related through a common ancestor, and that *Alcantarea* and *Werauhia* are also good groups.

Vriesea platynema

Last month, I also noted an article on *Alcantarea*. That study involved more *Alcantarea* species, but didn't include *Vriesea* from the Andes so it really didn't address *Vriesea*. It basically showed that *Alcantarea* members belonged together and were separate from eastern Brazilian *Vriesea*.

Here is *V platynema* at Live Art – it is known for its graceful lines and purple tips.



Help us to improve our Membership

**Tell people about your hobby !
Let apartment dwellers know these plants can be grown
inside or on a balcony !**

Ask Yourself, How can I help my club?

1. First and foremost we need **members to plan to attend all meetings**. What we ask is for people **to try not to plan anything else on our meeting day**. Look at our calendar above before you schedule your next event.
2. Participate by sharing your ideas; tell our president
3. You can **donate an occasional plant for the mini-auction or the raffle**. **You can also participate by buying raffle tickets or by bidding** on a plant in the auction.
4. Food and Drink – everyone is encouraged to bring in something for refreshments. The break has turned into a meal which is great. When you leave our meetings you are not starving for lunch. If you don't bring anything please contribute a few dollars to the kitty jar.
5. Newsletter – you might contribute a short (or better yet, long) article – a paragraph would be great. <>