



S.F.V.B.S.

SAN FERNANDO VALLEY BROMELIAD SOCIETY

P.O. BOX 16561, ENCINO, CA 91416-6561

sanfernandovalleybs@groups.facebook.com

<http://sfvbromeliad.homestead.com/index.html>

MAY 2015 NEWSLETTER

OFFICERS

Pres & News: **Mike Wisnev** V.P.: **Mary K. Carroll** Secretary: _____ Treasurer: **Mary Chan**
Membership: **Joyce Schumann** Health & Wellness: **Georgia Roiz** Web Page: **Mike Wisnev** FaceBook: **Barry Landau**
Directors: **Steve Ball, Bryan Chan, Richard Kaz -fp, Dave Bassani-fp**

next meeting: **Saturday May 2, 2015 @ 10:00 am**
Sepulveda Garden Center 16633 Magnolia Blvd. Encino, California 91316

AGENDA

9:30 – SET UP & SOCIALIZE

10:00 - Door Prize – one member who arrives before 10:00 gets a Bromeliad

10:05 - Welcome Visitors and New Members.
Make announcements and Introduce Speaker

10:15 –Speaker: Ray VanVeen

Program: “ Bromeliads of Brazil”

His talk will cover a trip he took a few years ago to Brazil covering Bromeliads and many other plants, the general landscape and people observed on that trip.

Ray, a respiratory therapist and travel consultant, is one of our members as well as the other two local Bromeliad Societies and a variety of other plant groups. Traveling is a favorite hobby. Last week when we communicated, he was in Paris. Ray has traveled extensively thru out the world in search of different flora and fauna. However, he favors the South American countries because of their extensive bio diversity.

Interesting facts about Brazil on page 9 <>

CONGRATULATIONS.....
all membership dues are paid for 2015

11:15 - Refreshment Break and Show and Tell:

Will the following members please provide refreshments this month: **Wesley Bartera, Dave Bassani, Duke & Kaz, Christy Brenner, Jeanette Bond, Mike & Sue Boess, and anyone else who has a snack they would like to share.** If you can't contribute this month don't stay away.... just bring a snack next time you come.

Questions about refreshments? Call Mary K. (818-705-4728) Leave message - she will call back.

Feed The Kitty

If you don't contribute to the refreshment table, please make a small donation to ([feed the kitty jar](#)) on the table; this helps fund the coffee breaks.

11:30 - Show and Tell is our educational part of the meeting – Members are encouraged to please **bring one or more plants**. You may not have a pristine plant but you certainly have one that needs a name or is sick and you have a question.

11:45 – Mini Auction: members can donate plants for auction, or can get 75% of proceeds, with the remainder to the Club

12:00 – Raffle: Please bring plants to donate and/or buy tickets. Almost everyone comes home with new treasures!

12:15 - Pick Up around your area

12:30 –/ Meeting is over—Drive safely <>

Mary K is taking a look back at the April meeting.....

George Rivera was a first time visitor to our group. He is an interesting young businessman. His program about landscaping with Succulents and Bromeliads included a variety of plants and was well received. He also donated plants for our raffle. Ray Van Veen couldn't attend the meeting but he sent over a dozen plants to the raffle and more that were auctioned. We continue to live up to our name for having the best refreshments of all the clubs. I know Ana Wisnev baked her incredible bread and Big Steve brought his wife's great corn casserole but that's all and oh yes Bob Wright brought a great chocolate cake. If I knew who brought the other dishes I would mention them too. Our Show and Tell sessions have grown a lot from just 2 or 3 guys participating. It is nice of Leni and Nancy to bring in plants. I don't have all the names who shoed plants but I'll take a stab at it..... there was Steve Ball, Bryan Chan, Bob Wright, Mohamed, Mike Wisnev and MaryK. We can really be proud of our participation; there are many months when our Show-N-Tell is comparable to the larger clubs. If you like Mike's bromeliad research articles, photo contributions, it doesn't hurt to tell him. And we really appreciated Roger Cohen's hummingbird article last month. <>

Announcements

LaBallona Bromeliad Show and Sale - After our May meeting you are all encouraged to visit that Show and Sale in Culver City. We will have flyers and directions at our meeting. They have a wonderful judged show and many plants for sale. The show and sale open at 9 – 4 on Saturday and Sunday.

- **Officers & Volunteers** – We still need a volunteer for Secretary and MaryK needs help with refreshments.

- **Bromeliad Show and Sale May 30 - 31** – we need volunteers to participate with the inside display and the food. We have flyers to pass out; pick up some at this May meeting.

- **Raffle Donations for the Show** – volunteer needed to collect raffle items and needed to work at a reception table including the raffle. Do you have an item to donate?

- **Happy Birthday to Kathleen Misko** – May 31

Taking a moment to reflect - Saturday evening, April 11, 2009 we lost our friend, Bill Baker, to a fatal heart attack. Bill was so important to our club's success. For a while it seemed like SFVBS wouldn't survive the loss of Bill. But everyone stuck together and we are showing some very positive growth.

- **FaceBook Page** – sanfernandovalleybs@groups.facebook.com is being maintained by Barry Landau. Please send Bromeliad photos or pertinent club information to him to add to our page. Barry just added a flyer for our show and he also put it on You Tube. check it out <https://youtu.be/9EqF6exHWJ8> And we will be adding a link to the web page.

- **SFV Bromeliad Website** – <http://sfvbromeliad.homestead.com/index.html>

Several years ago Kim Thorpe set up a website for us; however her job didn't allow enough time to keep it current. Thanks to Kim we had a great start. Recently Mike Wisnev did a fine job updating the material. There are two new pages, one about Bromeliad Basics, and another with other sites for those that want to learn more. The Calendar page shows all events for the year. And the Newsletter page has all the Newsletters back to mid-2013. Check it out. Many thanks to Kim and Mike.

- **Grand Opening - Desert Creations Cactus & Succulents** – **April 25** - Congratulations, Artie Chavez and Steve Frieze are now located at 18161 Parthenia, Northridge CA 91325. The new nursery is located in the rear of "Destination Workouts" (a large Red and Black building.) The nursery is open 7 days a week, however Steve, Phyllis, Kim or Artie are in the shop Friday, Saturday and Sunday. Other days by appointment.

- **Summer Picnic** - We have been invited to have our summer picnic at "Desert Creations" new location; the date is still to be determined; how does Saturday June 27 sound? The date hasn't been confirmed for that location but I think that is a good date to may be use as a substitute for the July 4th meeting which is canceled.

- **Xmas** - Another question still unanswered ... Should we **test** a joint **Xmas celebration w/ the cactus club?** -

Participation Rewards System – This is a reminder that you will be rewarded for participation. Bring a Show-N- Tell plant, raffle plants, and Refreshments and you will be rewarded with a Raffle ticket for each category. We realize not everyone has pristine show plants but each of us certainly have unidentified plants that can be brought in. Each member, please bring one plant. <>

Ramblings about Better Growing The editor is looking for information from other members for this column. I'm sure some of you have some growing tips to share about what to do or what not to do; it can be 1 or 2 sentences or 3 or 4 paragraphs. Member contributions are vital to keep the newsletter interesting and our SFVBS thriving. <>

Please Put These Dates on Your Calendar

Sat & Sun, May 2-3, 2015	LaBallona Bromeliad Show
Sat & Sun – May 30 & 31	SFVBS Bromeliad Show & Sale
Saturday, June 6, 2015	Speaker : <i>Guillermo Rivera</i>
Saturday, June 27, 2015 ??	Picnic at the Nursery ???
Saturday, July 4 , 2015	No Meeting due to holiday
Saturday, August 1, 2015	Speaker: <i>Andy Siekkenen</i>
Sat & Sun, August 1 & 2, 2015	South Bay Bromeliad Show
Saturday, Sept 5, 2015	Speaker: <i>Woody Minnick</i>
Saturday, Oct 3, 2015	SFVBS Regular meeting - STBA
Saturday, Nov 7, 2015	SFVBS Regular meeting - STBA
Saturday, Dec 5, 2015	Holiday Meeting – Time ???

STBA = Speaker To Be Announced

Speakers - We have some interesting speakers lined up for the next few months of this year but it is never too early to start planning for 2016. Let us know if you have any ideas for Speakers about Bromeliads or any similar topics? We are always looking for an interesting speaker. If you hear of someone, please notify Mary K. at 818-705-4728 or e-mail rango676@aol.com <>

Help us to improve our Membership

**Tell people about your hobby !
Let apartment dwellers know these plants can be grown
inside or on a balcony !**

Ask Yourself, How can I help my club?

1. First and foremost we need **members to plan to attend all meetings**. What we ask is for people **to try not to plan anything else on our meeting day**. Look at our calendar above before you schedule your next event.
2. Participate by sharing your ideas; tell our president
3. You can **donate an occasional plant for the mini-auction or the raffle**. You can also participate by **buying raffle tickets or by bidding** on a plant in the auction.
4. Food and Drink – everyone is encouraged to bring in something for refreshments. The break has turned into a meal which is great. When you leave our meetings you are not starving for lunch. If you don't bring anything please contribute a few dollars to the kitty jar.
5. Newsletter – you might contribute a short (or better yet, long) article – a paragraph would be great. <>

-- *Broms in Bloom - Member Photos* --

Submitted by Mike Wisnev..... This ***Billbergia* 'Titan'** is a Bill Baker hybrid of B. 'Windii' x B. *brasiliensis*. It is a beauty, with deep red bracts and dark blue petals.



Taxonomic Tidbits –

Vriesea s.l. IV – Bromeliad stigma types

By Mike Wisnev, SFVBS President (mwisnev@sbcglobal.net)

San Fernando Valley Bromeliad Society Newsletter – May 2015

You might be surprised to learn there is a 22 page article about stigma types for Bromeliads. Maybe even more that it was written in 1989. And even more that there were at least 3 papers about this topic before that.

You probably shouldn't be surprised. There is an astounding amount of literature about all sorts of seemingly obscure topics. Remember that the number 1 rule for academicians is publish or perish. So they publish. A lot.

I was certainly surprised, though for a slightly different reason. Having seen Smith and Downs, I see all the time how Bromeliads are distinguished based on shape of sepals, or connate filaments or other tiny features. I have also seen cacti books with pages of pictures of pollen viewed through an electron microscope. And pictures of tiny seeds and parts of seeds. But, I don't remember seeing something about stigmas. I haven't looked at many species descriptions in Smith and Downs, but don't remember them saying anything about stigmas. Sepals, filaments, seeds but not stigmas.

So I was surprised to find the article. While it covered Bromeliads generally, I am discussing it in connection with *Vriesea* because *Vriesea* have the most variation in stigma types.

Photography. Before continuing, realize the stigma is only a couple millimeters in size. So you will have to excuse my photos.

I take a ton of photos, and recommend you do so as well. I take a photo, or 5, of every plant I get. When it flowers, I take another. Every now and then, I'll photo it again to see how it compares, especially if I got it as a pup. It's a great way to see how you are growing it, and what it looks like over time. If you are like me, you will find some look a lot better in a few years, and some look worse. For that matter, take a picture in summer and compare it to the same plant in winter – it is likely to look different.

That said, I am hardly a serious photographer. Our own John Martinez is a serious photographer – he spoke on the topic at the LA Cactus and Succulent Club recently. I used a point and shoot until about 5 years ago when my wife got me a Nikon D5000. It came with a tripod, but I don't use it. I don't have a micro lens. So it is often hard to get a really good shot of something a couple millimeters long. Instead, I take a lot of pictures of it, and usually one turns out ok when you blow it up and crop it. I also usually don't stage my pictures of plants, though lately I have tried to move the plants away from too much clutter.

In 1989, two botany professors, Gregory K. Brown and Amy Jean Gilmartin, published a paper called “Stigma Types in Bromeliaceae – A Systematic Survey.” Systematic Botany 14: 110–132. They had published an earlier paper in 1984 on this topic and expanded their study to include over 400 species. Each of them has written extensively about Bromeliads. J. F. Utley had also written about certain *Vriesea* and their stigmas.

The stigma is the top of the female organ in a flower, which is called the pistil. The pistil consists of the ovaries at the bottom, a tube in the middle called the style and the stigma at the top. There are actually three stigma lobes.



Here is an example of the three lobes in this *Hechtia* flower.

These three stigma lobes often appear as one as one to the naked eye since they intertwine in some fashion. And to make things more complicated, during the course of the development of the flower they may intertwine at first and separate later.

The study shows there are (at least as of 1989) five different stigma types. The most common one is conduplicate-spiral. Almost all members of the Bromelioideae subfamily have this type, as do many others in other subfamilies.

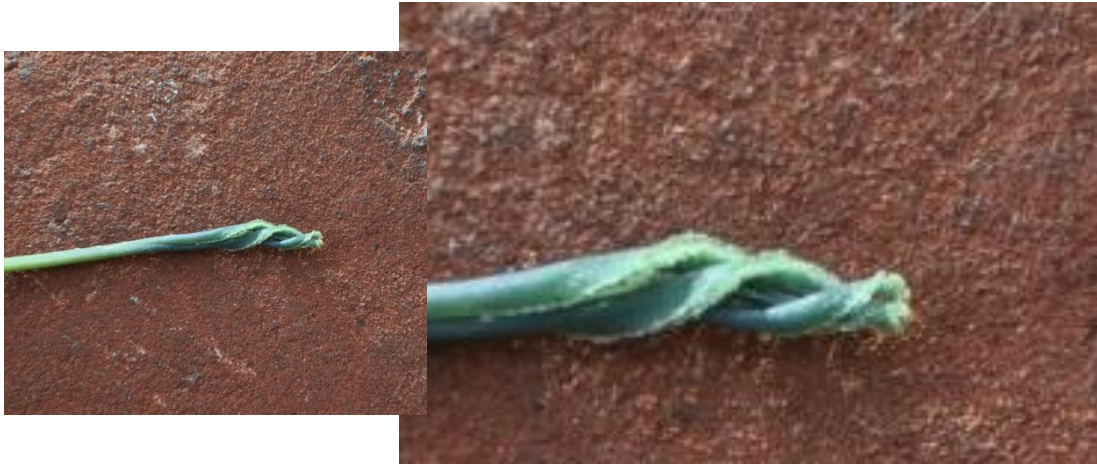
Here is an example, the stigma from my *Portea* ‘Pink’-

The stigma is small pyramid shaped structure in the middle that is white with purple swirls. The three lobes are actually wrapped around each other lengthwise (this is what conduplicate means) in a spiral so they look sort of like a spinning top.

While most Bromeliads have this structure, they can look a lot different. The shape and size may vary, some twist more or less, and some have papilla on them, which are small pimply structures. You can see these on the *Hechtia* stigma shown above.

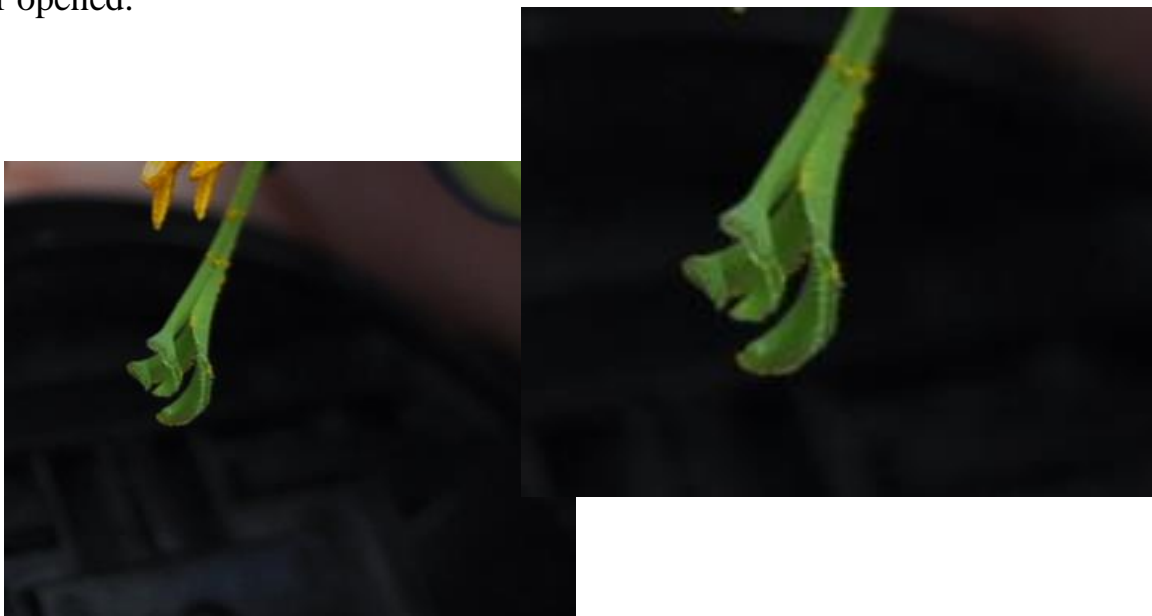


For example, here is a stigma of a *Billbergia* subgen *Helicodeae* that is also conduplicate-spiral, but looks quite different.



Some *Billbergia* pictures I have, show a more tightly wound stigma - - the one above is instructive since you can see the three lobes and how they wind around each other.


Here is another *Billbergia* in subgenus *Billbergia*. While it looks quite different, it is still conduplicate- spiral. Here it is unwound completely – it was probably much tighter just before the flower opened.



Here is yet another *Billbergia* – showing how the above one probably looked before it opened up. Even though it is tightly spiraled, it is very differently shaped than the subgen. *Helicodea* stigma above; it looks a lot more like *Portea* stigma in shape.



Most members of the Pitcairneae subfamily, as described by Smith and Downs before it was broken up, have the conduplicate form. But some have a second form is labeled “simple-erect.” For that matter, so do two genera in the Bromelioideae subfamily – *Cryptanthus* and *Ochagavia*. I couldn’t find a good picture– I hadn’t been aware of this feature and it is too small or hidden or blurry in the pictures I have. But think of three sharpened pencils wrapped in a rubber band. The sharpened ends represent the stigmas – not wrapped, just more or less sticking straight out. Thus, the name - simple-erect.



The article only studied 3 *Hechtias*, and all were simple erect. So the *Hechtia* picture above may show this form, after they have separated quite a bit. This is from *H glomerata*, which is not one of the three they studied, so I am not sure it is simple-erect.

Things get more interesting when we turn to the Tillandsioideae subfamily. All five stigma types show up here. Of the 244 species studied from this subfamily, almost half had conduplicate spiral, and another quarter had simple-erect. The rest had the other three forms. Most *Tillandsia* had conduplicate-spiral or simple-erect, but 8 of them in one subgenus had a new form called coralliform. The article is copyrighted, so I can't show a photo, but this form develops over stages and it looks like a different form of coral in each stage. At the end, it looks like one structure covered with papillae.

Vriesea have four different forms of stigmas – we will visit them next month.

[illegible]

San Fernando Valley Bromeliad Society

is participating in

LA Cactus & Succulent Society's

15th Annual Drought Tolerant Plant Festival

Sat & Sun May 30 - 31, 2015 9am - 4 pm

**Free
Family-Friendly**

Beautiful Bromeliads



on display
Indoors and
Outdoors

Learn about
Succulent Bromeliads
and how to use them with other
drought tolerant plants.

SFV Bromeliad Society

[Http://sfvbromeliad.homestead.com](http://sfvbromeliad.homestead.com)

Sepulveda Garden Center
16633 Magnolia Blvd.
Encino, CA 91416

SFV Bromeliad Society Meetings

1st Saturday each month 10:00 am - Noon

Free at the Sepulveda Garden Center

Power-Point Programs - Refreshments - Raffles